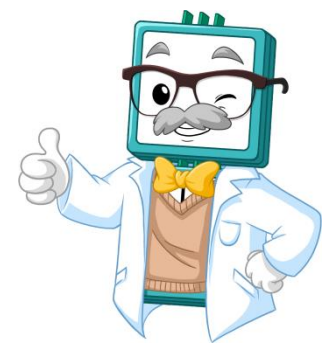
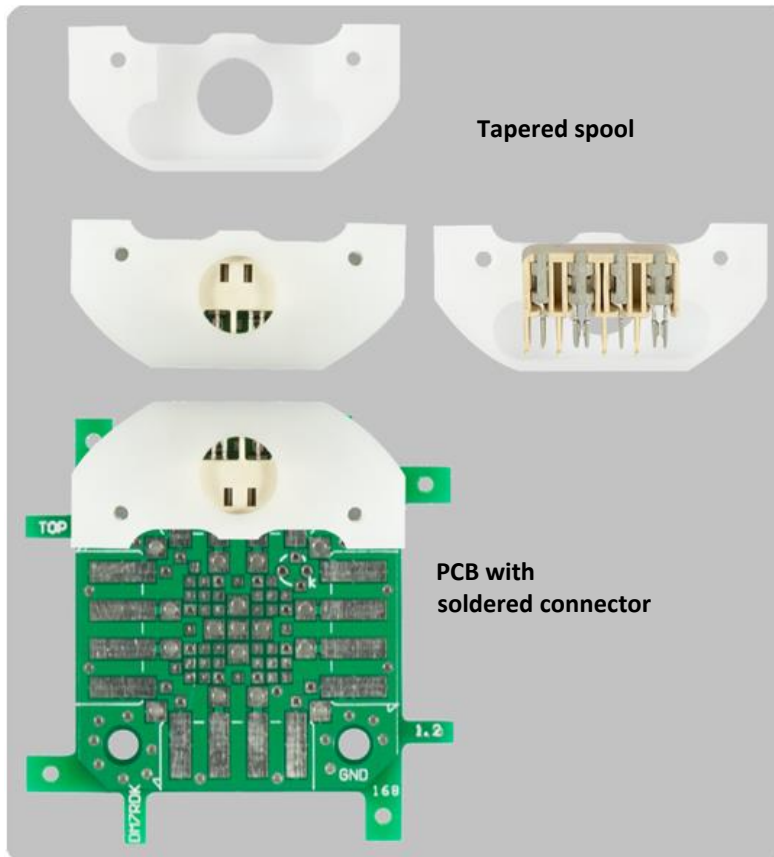


Safety instructions

for correct soldering of the connectors to the PCBs



Please follow these tasks to solder the connector to the PCB:

1. Plug the connector into the tapered spool to achieve the right position
2. Put the tapered spool to the right spot on the PCB
3. For a stable positioning screw the two M2 screws into the brick from below. Alternatively, use a fixing clamp
4. Heat the contacts up for a minimum of 15 seconds so that the tin solder can establish a save connection
5. First, solder the two middle pins
6. Remove the tapered spool, since it could be damaged by soldering the both outer pins
7. Solder the two outer pin

Warning: A soldering iron can achieve a very high temperature which can lead to injuries. Please use a heat-resistant surface and under supervision.